



European Commission United Nations Development Programme International IDEA

***Joint Training on
Effective Electoral Assistance***

DAY 4

Brussels, 22-26 October 2007



EC Resources and Services

Francesco TORCOLI
Election Specialist
AIDCO-EC

Joint Training on
Effective Electoral Assistance
Day 4



Presentation Overview

EC Organigramme and Internal Structure

Who does What at EC

EC Resources for Electoral Assistance

EC Project Documentation

Quality Support Group - Disbursement of Funds

POLICIES

- ▶ Agriculture and Rural Development
- ▶ Competition
- ▶ Economic and Financial Affairs
- ▶ Education and Culture
- ▶ Employment, Social Affairs and Equal Opportunities
- ▶ Enterprise and Industry
- ▶ Environment
- ▶ Fisheries and Maritime Affairs
- ▶ Health and Consumer Protection
- ▶ Information Society and Media
- ▶ Internal Market and Services
- ▶ Joint Research Centre
- ▶ Justice, Freedom and Security
- ▶ Regional Policy
- ▶ Research
- ▶ Taxation and Customs Union
- ▶ Transport and Energy

EXTERNAL RELATIONS

- ▶ Development
- ▶ Enlargement
- ▶ EuropeAid - Co-operation Office
- ▶ External Relations
- ▶ Humanitarian Aid
- ▶ Trade

GENERAL SERVICES

- ▶ Communication
- ▶ European Anti-Fraud Office
- ▶ Eurostat
- ▶ Publications Office
- ▶ Secretariat General

INTERNAL SERVICES

- ▶ Budget
- ▶ Bureau of European Policy Advisers
- ▶ Informatics
- ▶ Infrastructures and Logistics - Brussels
- ▶ Infrastructures and Logistics - Luxembourg
- ▶ Internal Audit Service
- ▶ Interpretation
- ▶ Legal Service
- ▶ Personnel and Administration



RELEX FAMILY

EXTERNAL RELATIONS

- ▶ Development
- ▶ Enlargement
- ▶ EuropeAid - Co-operation Office
- ▶ External Relations
- ▶ Humanitarian Aid
- ▶ Trade

Dealing with Electoral Assistance

DG Development
DG External Relations
EuropeAid



EC - Institutional Set up and Functioning

There is no focal point at HQ for electoral assistance in *support to Delegations and National Authorities* which are "Chef de File" from *identification to evaluation*.

Such activities are handled by a number of different services throughout the EC according to the different phases of the Operations Cycle and sources of funds.

Programming:

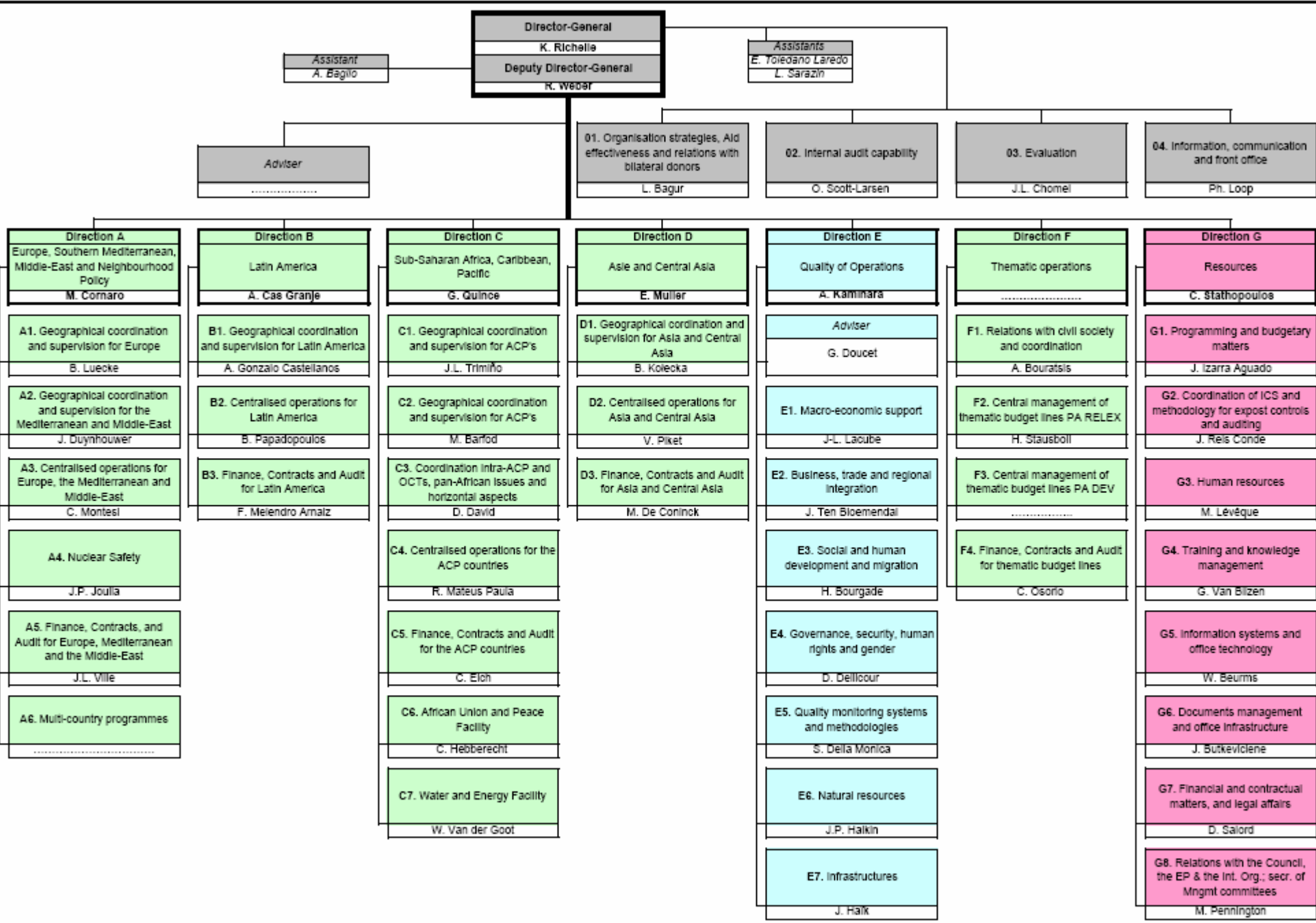
**RELEX B1 - Mainstreaming
DEV/RELEX Country Desks**

From Identification to Evaluation

**AIDCO Geo-coordinators
AIDCO 04 – CMU**

Quality Support Operations:

AIDCO E4





AIDCO E4

Covers the thematic issue of electoral assistance in AIDCO without distinction of financial instruments or geographical areas with a specific focus on four main areas:

- Operational guidance and implementation strategies for the management of project/programmes relating to Election Assistance**
- Quality check/support to be performed at predefined stages of the operations' cycle in order to provide assurance on the application of the recommended quality standards**
- Support on demand in all phases of the operations' cycle**
- Monitoring of impact**



Sources of Funding 2007

- ❑ **European Development Fund (EDF)**
- ❑ **European Neighborhood and Partnership Instrument (ENPI)**
- ❑ **Development Cooperation Instrument (DCI)**
- ❑ **Instrument for Stability (IfS)**
- ❑ **European Instrument for Democracy Human Rights (EIDHR)**



European Development Funds

- ❑ **The European Development Fund (EDF) is the main instrument for Community aid for development cooperation in the ACP countries and the Overseas Countries and Territories (OCT).**
- ❑ **EDF does not come under the general Community budget - it is funded by the Member States, covered by its own financial rules and managed by a specific committee.**
- ❑ **Each EDF is concluded for a period of around five years. Since the conclusion of the first partnership convention in 1964, the EDF cycles have generally followed that of the partnership agreements/conventions.**
- ❑ **The current 9th EDF was concluded at the same time as the Cotonou Agreement, and the 10th EDF will start in January 2008 . This instrument is fully available to promote human rights, democracy and rule of law programmes, in accordance with the basic principles of governance set out in its Art 8, Art.9 and Art 11 of Cotonou Agreement.**



General Budget

- ❑ **The EU Community's General budget, in its 'External Actions' section covers the EC aid resources deployed in the rest of the world, under the geographical instruments other than EDF, such as:**
- ❑ **European Neighbourhood and Partnership Instrument: covers community assistance to: Algeria, Armenia, Azerbaijan, Belarus, Egypt, Georgia, Israel, Jordan, Lebanon, Libya, Moldova, Morocco, Palestinian Authority, Russia, Syria, Tunisia and Ukraine.**
- ❑ **Development Cooperation Instrument : Asia, Latin America and South Africa.**
- ❑ **This assistance is available, inter alia, to promote human rights, democracy and the rule of law, through programmes focused primarily but not exclusively on assistance channelled via governments, much of it targeted at tackling the root causes of poverty.**



EIDHR

is a thematic programme that has available approximately € 100 million/year under Chapter B7-7 of the budget to support human rights, democratisation and conflict prevention activities.

Its specificity is that these activities are to be carried out primarily in partnership with NGOs and international organisations.

In the field of electoral assistance is used primarily for civic education and voter information campaigns, public awareness-raising programmes, capacity building and technical assistance for domestic observers groups. Lately also the ACE project is was successfully considered as a targeted project.

The EU Electoral Observation Missions are exclusively funded by EIDHR.



Instrument for Stability (IfS)

The specific aims of IfS are:

- **In a situation of crisis or emerging crisis, to contribute to stability by providing an effective response to help preserve, establish or re-establish the conditions essential for the proper implementation of the Community's development and cooperation policies ("crisis response and preparedness" component);**
- **In the context of stable conditions for the implementation of Community cooperation policies in third countries, to help build capacity both to address specific global and trans-regional threats having a destabilising effect and to ensure preparedness to address pre- and post-crisis situations ("global and regional trans-border challenges" component).**



Programming

Country Strategy Papers

National Indicative Programme

- Jointly written and signed with National Authorities**
- Assessing available entry points**
- Medium and Long Term Assistance**
- Political Advisability and Attainable Results**
- Use of Available Tools, local and external expertise**
- DG DEV/RELEX Desks Assessment Missions**
- Need Assessment Missions of UNEAD**
- Focal or Non Focal Sectors in the CSP: Good Governance, Capacity Building, Education...**
- Linking Electoral Assistance to EC and National Development Policies**

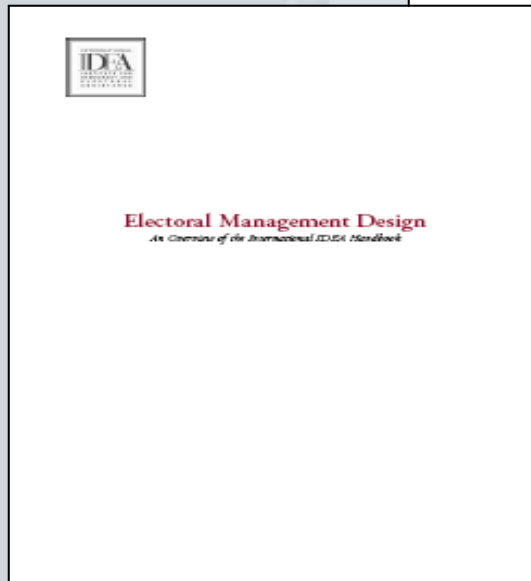
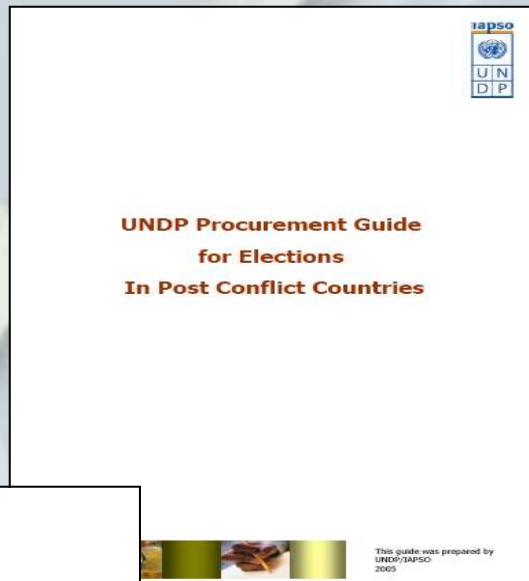


Identification and Formulation

- Relevance, feasibility, effectiveness and sustainability**
- Logframe Approach**
- Indicators and Source of Verification**
- Previous EUEOMs, domestic observation**
- AIDCO E4 or external expertise mission**
- Joint Identification and Formulation Missions**
- Political Level**
- Financial Level**
- Operational Level**



Operational Level



- EMB Operational Plan**
- Timelines**
- Specification**
- Procurement**
- Specific Expertise**



AF (Action Fiche)

- **At the end of the identification phase headquarters should be briefed on the progress achieved in identifying a planned project or programme. The information to be provided is consolidated in an *Action Fiche (AF)*, where the relevance and likely feasibility is demonstrated.**
- **At this stage quality support is provided to orient further preparatory work during the formulation phase.**



Financial Proposals (FP)

- Provide a Basis for the inter-service *consultation*
- Provide the relevant financing committee with sufficient information so as to allow it to give an *opinion*
- Provide the Commission with sufficient information so as to allow it to take a *decision*
- The detailed description of the operation is laid down in the Technical and Administrative Provisions attached to the Financing Agreement.



Quality Support

