



**European Commission**  
**United Nations Development Programme**  
**Joint Task Force on Electoral Assistance**



**EC-UNDP Workshop on**  
**Formulating and Implementing Electoral Assistance Projects in the**  
**Context of the EC UNDP Partnership**

**Electoral assistance with a gender**  
**perspective in Africa**

*Marie Pascaline Menono*

*GPECS Regional Gender Advisor for Africa*

**Brussels 1 - 4 February 2011**

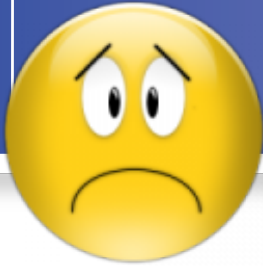


# Why is it important to develop a gender sensitive electoral assistance ?



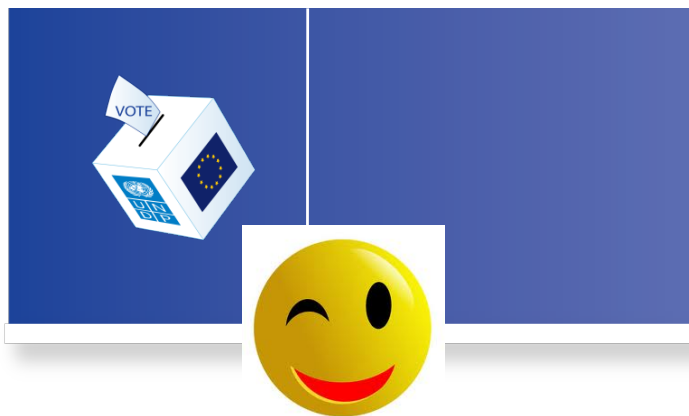
*Under international standards, men and women have an equal right to participate fully in all aspects of the political process.*

*In practice, however, it is often harder for women to exercise this right...*



## SC resolution 58/142 2004

*Yet despite all these standards, the UN SC recognizes that « despite general acceptance of the need for gender balance in decision-making bodies at all levels, women are still largely underrepresented at most levels of government, especially in ministerial and other executive bodies, and in legislative bodies (resolution 58/142 2004)»*



- Electoral Assistance offers us the opportunity to reinforce the civil and political rights of citizens, especially of women.
- The UNDP General Program for Electoral Cycle Support (GPECS) have a gender component.





## *GPECS Gender component*

The overarching objective of the Gender component of GPECS is to achieve full and equal participation of women as voters and candidates based on the electoral cycle approach.

The Africa Gender component :

1. Ensure that electoral assistance addresses gender inequality and promotes the empowerment of women in the electoral cycle;
2. Bolster women's representation and political participation in decision-making bodies.



## *Country advisory services available*

- Support for gender sensitive Need Assessment Mission (NAM).
- Advice and support for the development of electoral assistance project with a gender transforming perspective.
- Support for capacity development on gender and elections.
- Availability of Gender expertise through the global roster.
- Assistance for the implementation of activities aimed at empowering women in the electoral cycle.
- Support and ongoing advice to the regional advisors for Africa based in Dakar and Johannesburg.



## *To support Electoral assistance with a gender transforming perspective*

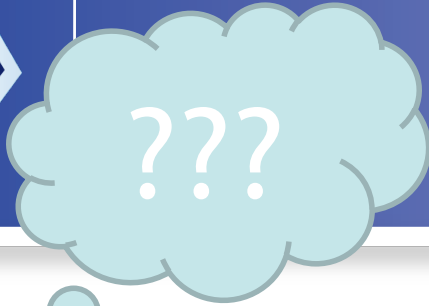
*To support Electoral assistance with a gender transforming perspective is focusing on two areas:*

1. Women's empowerment :

Give support to women's organization activity aiming to improve their participation to the electoral process.

2. Integration or mainstreaming :

All decisions on electoral assistance take in account the different needs of men and women.



# *What levers GPECS operate?*

*Electoral assistance with a gender transforming perspective will support the development of gender sensitive and supportive :*



- Legislative framework
- Political Participation
- Voter Registration
- Voter and Civil Education
- Elections Administration
- Election
- Observation





# *A gender sensitive and supportive legislative framework*

GPECS Gender gives support for the establishment of a gender sensitive and supportive legislative framework in order to advance women's participation in the electoral process (QIF) :

1. Constitution
2. Electoral code
3. Political parties law



# *Equal Political Participation*

GPECS provide advice to the country offices for electoral assistance to be able to :

- Provide advice on legislation, electoral systems that can advance women's participation in the electoral process (Ex : Niger, DRC, Cote d'Ivoire, Burkina Faso).
  
- Help establish and support cross-party cooperation among women ( QIF for post conflict countries)
  
- Assist in the training of women candidates, political parties, journalists, security forces on elections and gender (RSC Dakar, CO Niger and Burkina, South Africa).
  
- Provide support and training to elected women (Ex : PAPEN in Niger).



# *Gender sensitive voter Registration*

GPECS gives support to country offices, EMB, women's organizations for the development of :

- Effective voter registration methods;
- Voter registration procedures with a view to ensuring they do not disadvantage women;
- Rules to facilitate the registration and voting of refugees and displaced persons.



# *Gender-sensitive Voter and Civic Education*

GPECS Gender support EMB for :

- Gender-sensitive voter education programmes to ensure women's full participation in their design and dissemination;
- Education programmes that include information on the benefits of democracy, reconciliation and peace-building, and on the equality of women and men;



# Elections administration

Through GPECS Gender, election practitioners, EMBs and CO receive assistance and support to mainstream gender in electoral administration through :

1. The development of training tools, partnership promotion and dissemination of information.
2. Support communities of practice of AMB.r work (Niger, DRC).



# *Election Observation*

- Different funders support observation missions set up specifically to look at women's participation in elections;*
- Based on Electoral Cycle Approach, GPECS Gender continue to support the process of democratization, and equality after the election is over (PAPEN Niger, Cap Vert).*



Remember!



**It is important to support  
the establishment of a  
gender sensitive and  
supportive legislative  
framework, for women's  
political participation**





- Provide advice on legislation, electoral systems and best practices that can advance women's participation in the electoral process;**
- Help establish and support cross-party cooperation among women;**



*Remember!*



- Provide advice and assistance on effective voter registration methods;**
- Help evaluate voter registration procedures with a view to ensuring they do not disadvantage women;**
- Facilitate the registration and voting of refugees and displaced persons.**





*Remember!*

**Support gender-sensitive voter education programmes and ensure women's full participation in their design and dissemination;**



*Remember!*

**Support Election Management Bodies in developing a clear policy on advancing women's electoral participation and take gender considerations into account in all aspects of their work.**



**Electoral assistance with a gender transforming perspective must give special attention to the role of political parties.**



# *Business Card*

**Marie Pascaline Menono**  
**GPECS Regional Gender and Elections Adviser**

UNDP Régional Service Centre for Africa  
5, Boulevard de l'Est, Point E BP. 5640 Dakar Fann, Sénégal

**Téléphone :**            **+221 33 869 2748**  
                                  **+221 33 869 06 20**

**Fax :**                     **+221 33 869 0681**

**E-mail :**                 **[marie.menono@undp.org](mailto:marie.menono@undp.org)**





**Questions ?**